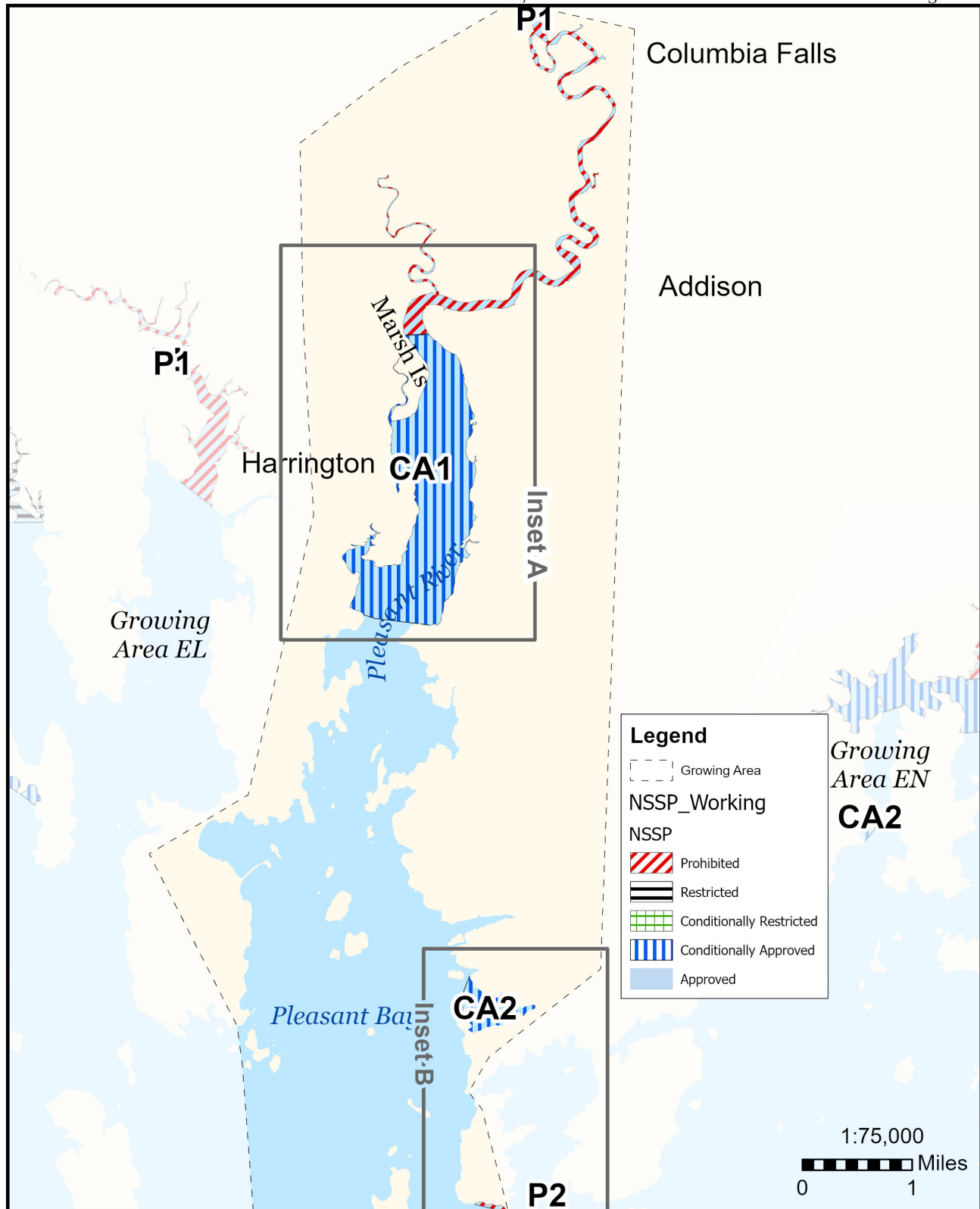


Maine Department of Marine Resources

Growing Area EM, Insets A and B May 5, 2026
Columbia Falls, Addison



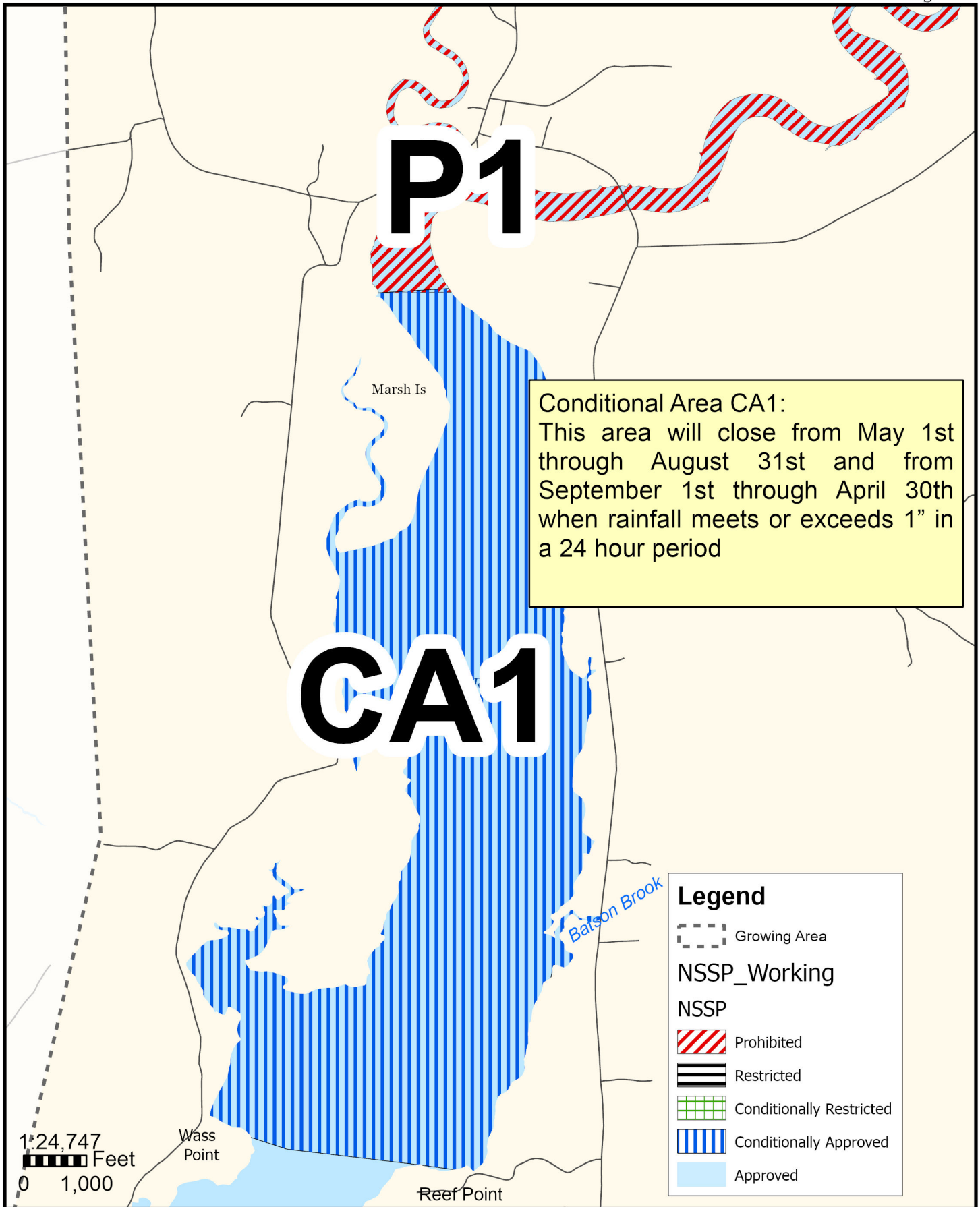
This map is provided as a courtesy. Read the provided legal notice for closure details. Closures are not shown outside of the designated growing area. Maritime navigational aids are for reference only and are not suitable for maritime navigation.

Maine Department of Marine Resources

Growing Area EM, Inset A

May 5, 2026

Addison



Conditional Area CA1:
This area will close from May 1st through August 31st and from September 1st through April 30th when rainfall meets or exceeds 1" in a 24 hour period

Legend

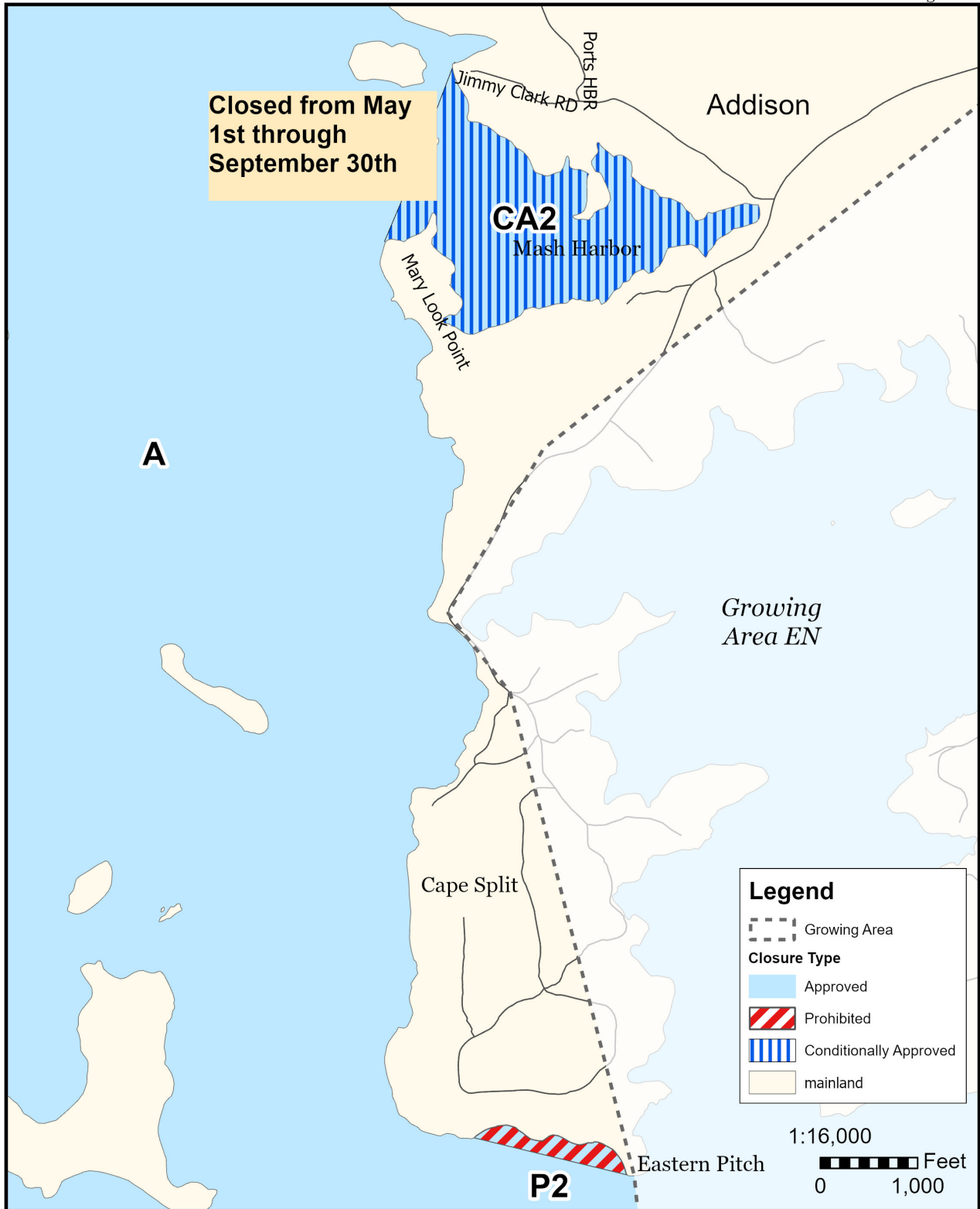
- Growing Area
- NSSP_Working
- NSSP
- Prohibited
- Restricted
- Conditionally Restricted
- Conditionally Approved
- Approved

This map is provided as a courtesy. Read the provided legal notice for closure details. Closures are not shown outside of the designated growing area. Maritime navigational aids are for reference only and are not suitable for maritime navigation.

Maine Department of Marine Resources

Growing Area EM, Inset B
Addison

May 5, 2026



This map is provided as a courtesy. Read the provided legal notice for closure details. Closures are not shown outside of the designated growing area. Maritime navigational aids are for reference only and are not suitable for maritime navigation.